

WHAT TO AVOID

- Stay away from construction sites and highway work zones, including recently seeded areas.
- Avoid mowing activities, open water, ravines, bridges, overpasses or retaining walls that could be dangerous for pedestrians.
- Avoid poison ivy or other noxious weeds. Stay away from recently applied herbicides.
- Never pick up heavy, large or hazardous materials. Mark the location and notify Mn/DOT for pickup.
- Do not pick up dead animals. If the animal is small, leave it for scavengers. If it is large, note the location and report it to Mn/DOT.
- Do not move explosives, abandoned barrels or other containers with unknown contents. Note the location and contact Mn/DOT.

WHAT TO WEAR

- Work clothes
- Heavy gloves
- Hat and long sleeves to avoid sunburn
- Heavy leather shoes or work boots with good ankle support
- Sunscreen; insect or tick repellent
- Safety vest. **THIS IS MANDATORY.**



METH LAB WASTES

Never pick up meth lab wastes. **Propane cylinders from gas grills are especially dangerous.** They are used to transport anhydrous ammonia and can explode, causing burns and severe respiratory damage. **DO NOT TOUCH.** Report their location to Mn/DOT.

Meth wastes to avoid:

- Propane cylinders with brass fittings that are blue/green or modified
- Medicine boxes
- Pill residue (pinkish putty-like substance)
- Respirator masks
- Rubber gloves
- Rubber hoses and clamps
- Sheets and pillowcases stained pink or red
- Corning or Pyrex containers with rubber hoses attached



FOR MORE INFORMATION

Contact your local Mn/DOT office listed here:

Bemidji
3920 Highway 2 W
Bemidji, MN 56601
218-755-6500

Baxter - Mary Nieken
7694 Industrial Park Rd
Baxter, MN 56425
218-828-5715
1-800-657-3971

Twin Cities
3485 Hadley Ave N
Oakdale, MN 55128
651-366-4350

Rochester
2900 48th Street NW
Rochester, MN 55901
507-286-7509

Virginia/Duluth
101 N Hoover Road
Virginia, MN 55792
218-742-1103

Crookston
1320 Sunflower Street
Crookston, MN 56716
218-277-7958

St. Cloud
3725 12th Street North
St. Cloud, MN 56303
320-223-6545
1-800-657-3961

Morris/Detroit Lakes
610 Highway 9 South
Morris, MN 56267
320-208-7002
1-800-657-3877

Owatonna
1010 21st Avenue NW
Owatonna, MN 55060
507-446-5518

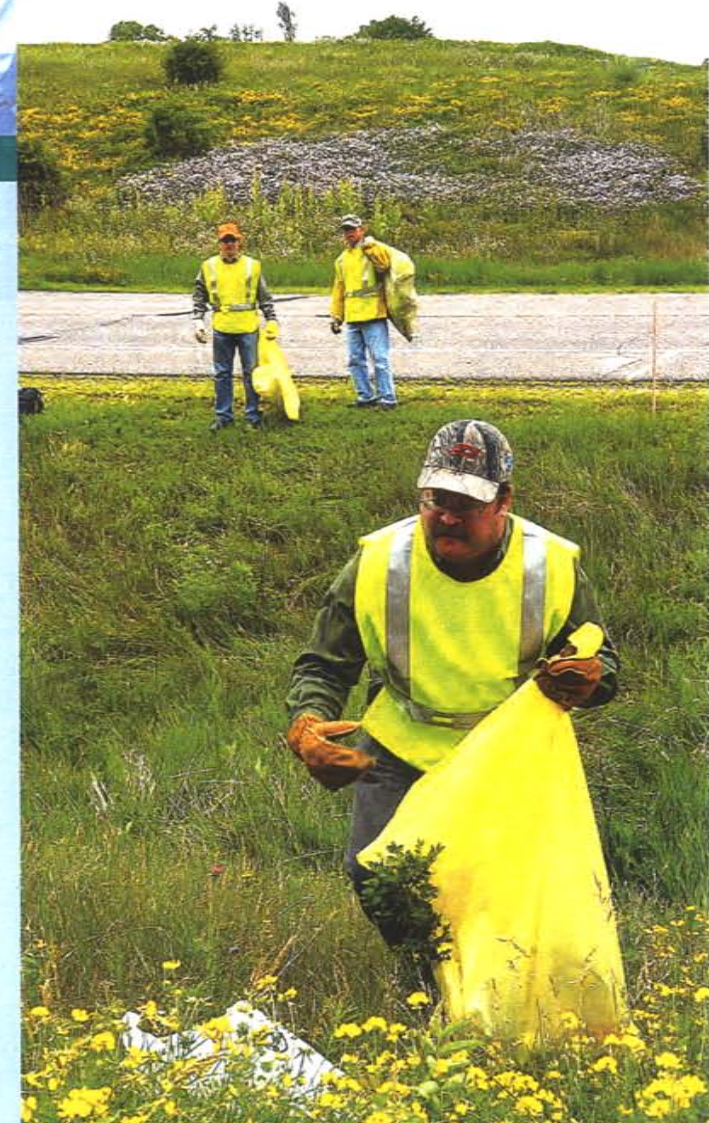
Windom/Mankato
180 County Road 26
Windom, MN 56101
507-831-8002
1-800-804-3295

Marshall/Willmar
1800 E College Drive
Marshall, MN 56258
507-537-6146
1-800-657-3748

www.dot.state.mn.us/adopt

rev. 10/09

Minnesota's Adopt a Highway Program Safety First





Minnesota Department of Transportation's Adopt a Highway program is a public service program for volunteers to pick up litter along state highways

REMEMBER

A highway is a dangerous place to be. Every crew member should possess these qualifications:

- At least 12 years of age, unless otherwise permitted.
- Mentally alert, good common sense.
- Good physical condition, including sight and hearing.
- Up-to-date tetanus shot.
- Sense of responsibility for safety of self and others.
- Supervision for workers under age 18. Provide at least 1 adult per 3 children under age 12.



PLAN AHEAD

- Review safety precautions and take them seriously.
- Assign work teams and leaders before you reach the site. Distribute trash-bags beforehand. Use cell phones to communicate among work teams.
- Carpool to the site to reduce the number of vehicles along the road. Whenever possible, park vehicles off the road, e.g. parking lots or seldom-used approaches. If parking on the shoulder, park to the far right of the white line so your vehicle does not encroach into the driving lane. Park in advance of the area and on the same side of the highway that crews are working. **Don't park along interstate highways.** Contact Mn/DOT for specific parking instructions.
- Bring a first aid kit and a cell phone. Identify the nearest hospital and know how to get there in an emergency.
- Don't overexert yourself. Bring along a supply of drinking water and take breaks.



WHILE YOU WORK

- Do not pick up weapons, hazardous materials or dead animals. Mark the location with a trash bag and report it to Mn/DOT.
- Do not put syringes or needles in the trashbag. They can easily puncture the bag and cause serious injury. Mark the location with a trashbag and report it to Mn/DOT.
- Do not crush collected trash to make more room in the bag; broken or jagged objects can cause injuries.
- Secure the bags by tying the ends. Place the bags just off the shoulder.
- Work only during daylight hours and during good weather. Do not work when roads are wet or when visibility is poor.
- Face the traffic and work one side of the road at a time. Do not cross the road to get to your vehicle.
- Do not pick up litter in the median.
- For your safety, it is imperative that motorists see you. **Always wear your safety vest.** Stay in a group and be constantly alert for approaching traffic.
- Do not wear headsets that could prevent you from hearing traffic or other hazards.
- Do not horse around or do anything to purposely distract drivers.
- All-terrain vehicles are allowed as long as they are used in accordance with existing laws.